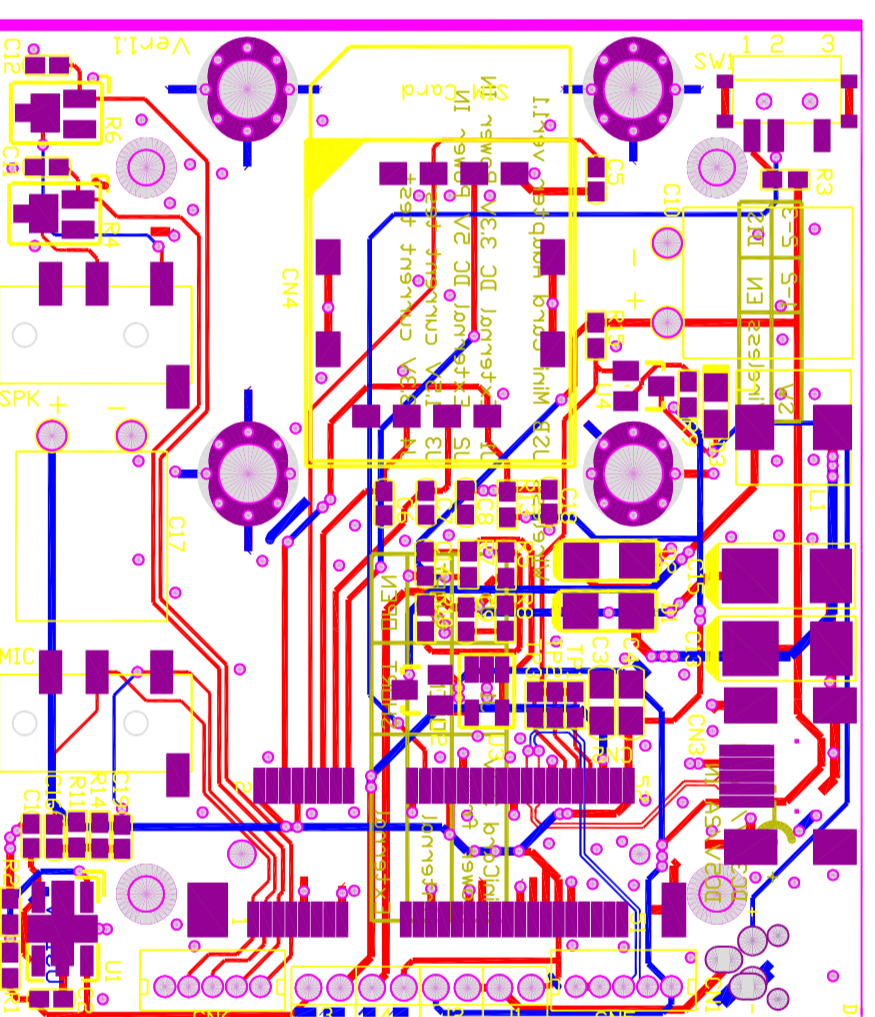
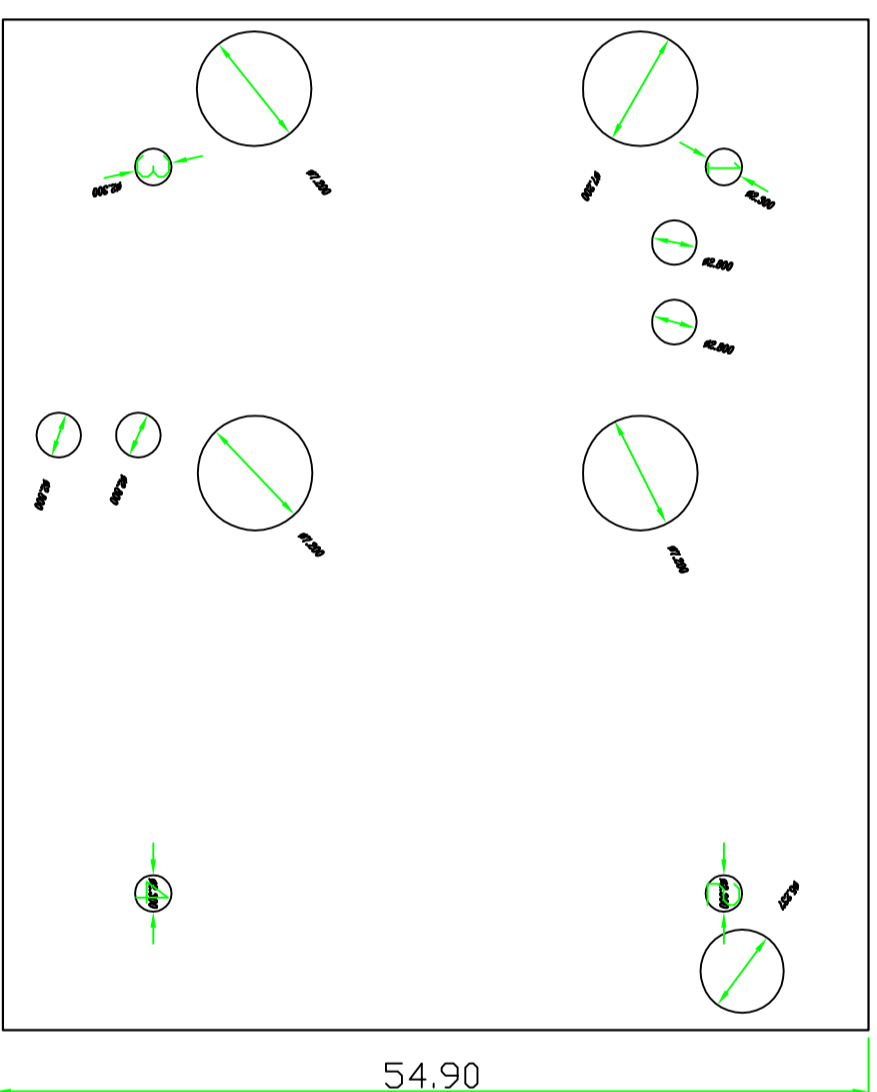
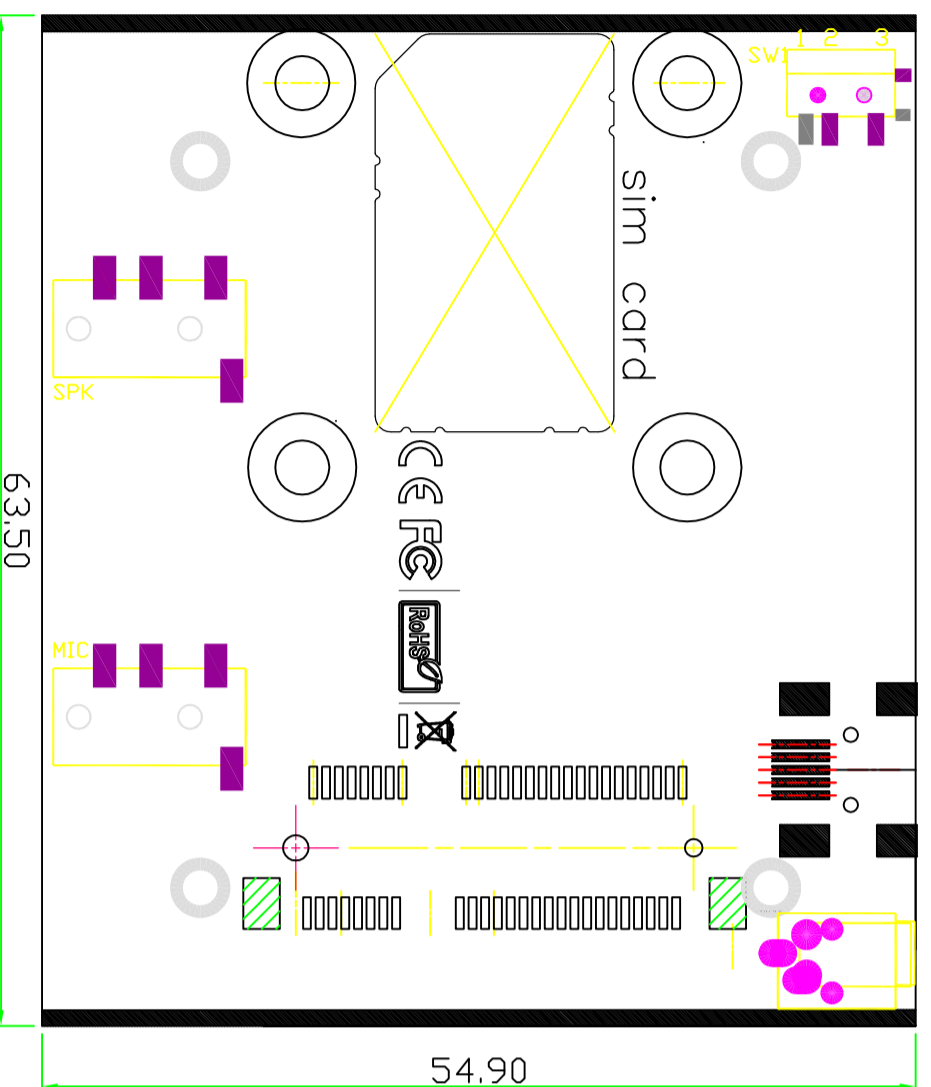
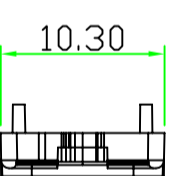
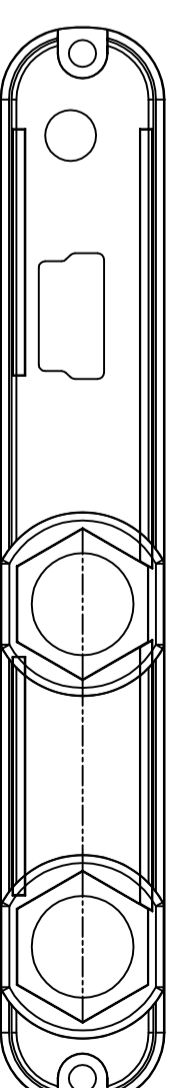
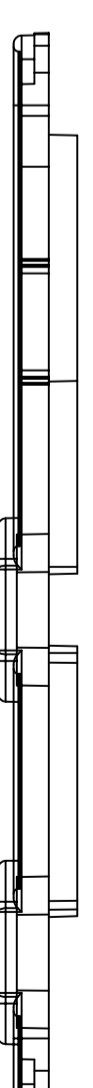
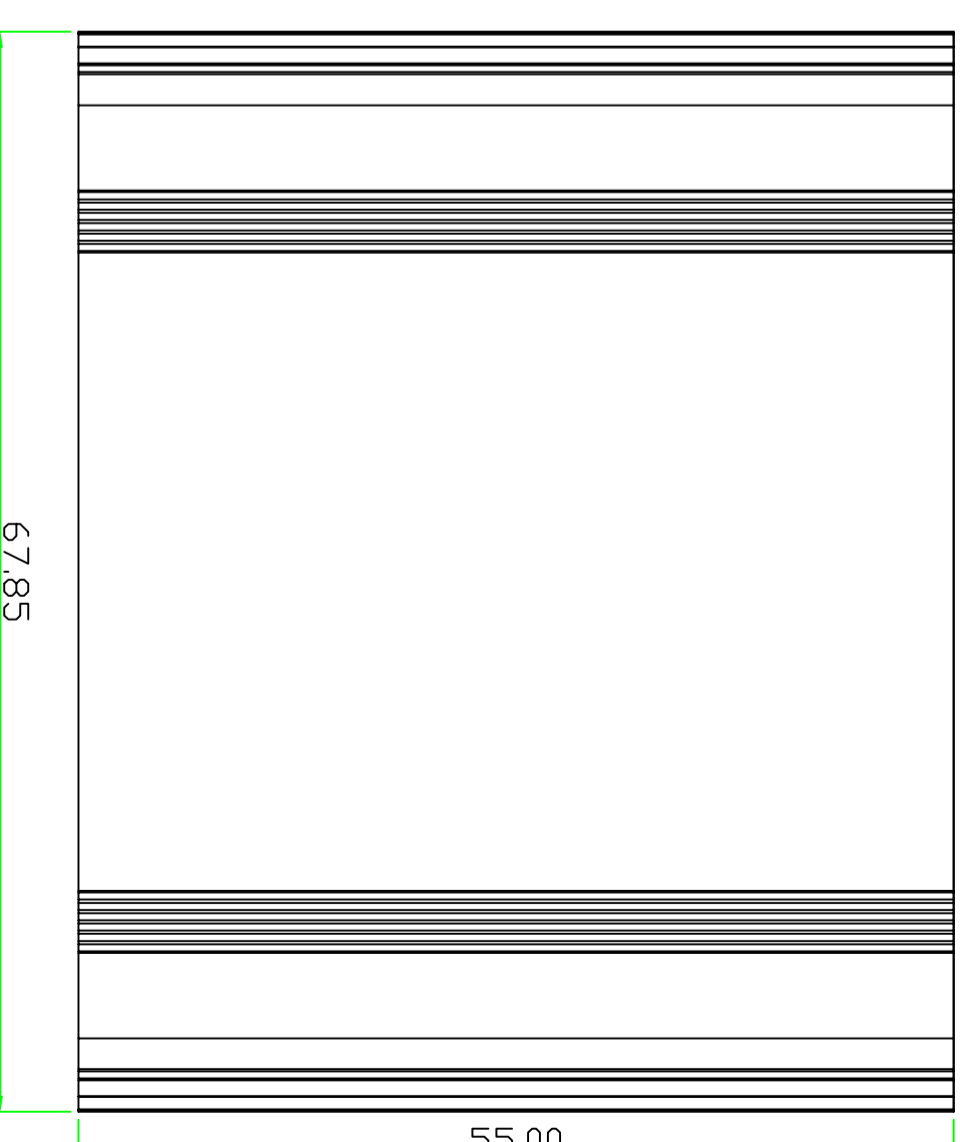


Full-Mini Card dimension



Module PCB



PCB LAYOUT

2Layer PCB think 1.2mm

FR4, 2 layer PCB,

Cu area

- Wireless USB Mini Card Adapter ver1.1b
Jump description
- J1 DC 3.3V POWER input
 - J2 POWER from Internal DC2DC circuit connector
 - J3 15V current PROCESS LED pin
 - J4 15V current PROCESS LED output
 - J5 DC 5.0V POWER input
 - J6 15V POWER enable
 - J7 external POWER LED output
- | | | |
|---------------------|-------|-------|
| DC JACK POWER INPUT | J1 | J5 |
| DC 3.3V IN | SHDR1 | DPEN1 |
| DC 5.0V IN | DPEN1 | SHDR3 |

APPROVED:	- TOLERANCES -		UNIT:	mm		TITLE :	MiniCard Adapter		SHEET
ENGINEER:	General	Angles				DRAWING NUMBER:			1/1
CHECKED:	30~ ±0.25	0° ±10°				Date			SIZE
	10~30 ±0.20	0.0° ±2°				2010/May/27th			A4
DRAWN:	5~10 ±0.15								REV.
Gerry Chen	0~5 ±0.10								A/0