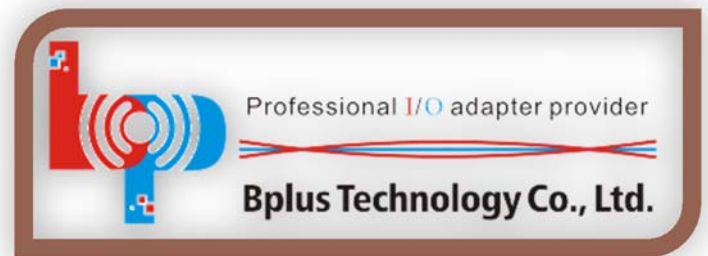


U31MR RAID setting SOP



Roger Tseng
Bplus Technology Co., Ltd.
2015/12/15
roger@bplus.com.tw

U31MR

Dual mSATA SSD RAID to USB 3.1 Type C



Catalog

U31MR.....	1
Catalog	2
RAID setting Step	3

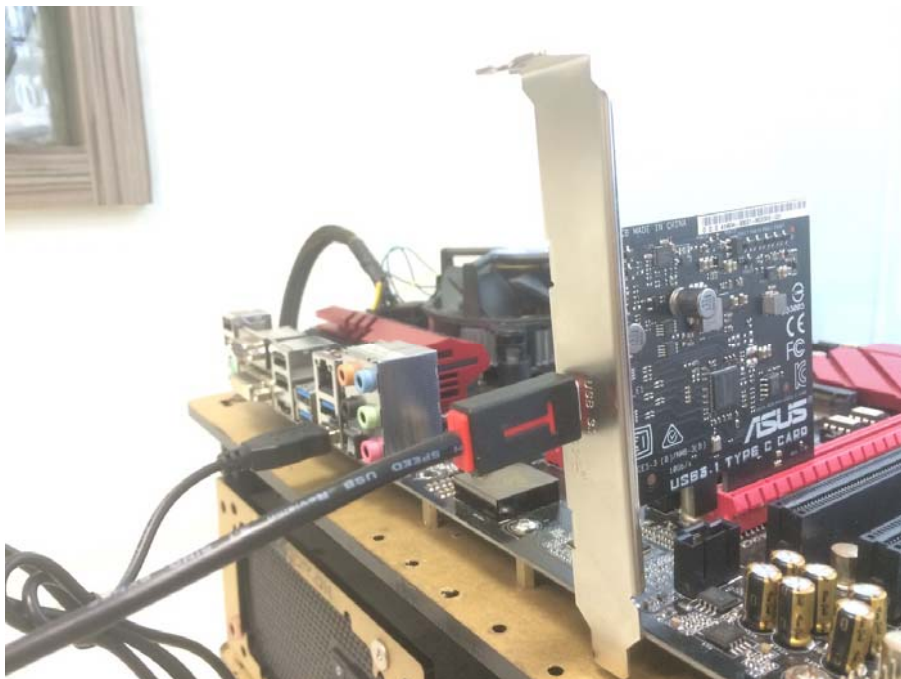


RAID setting Step

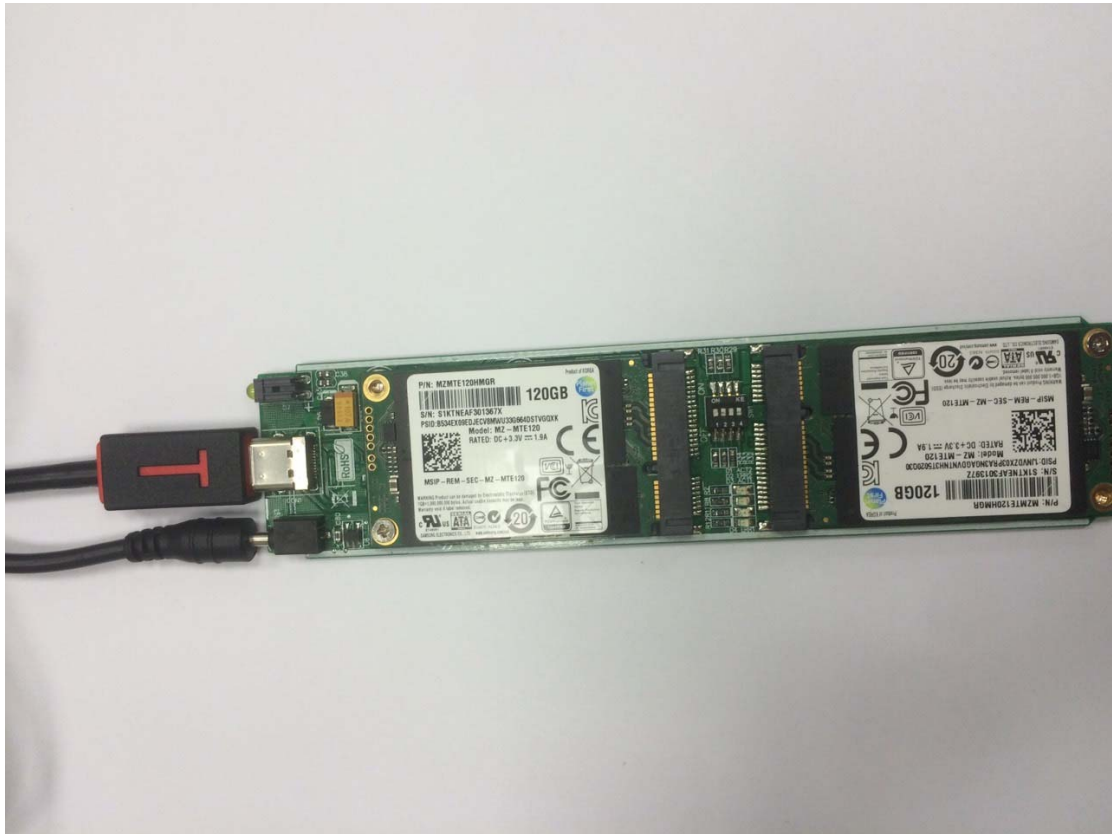
Step 1: Insert 2 SATA SSD to U31MR · see the picture as below:



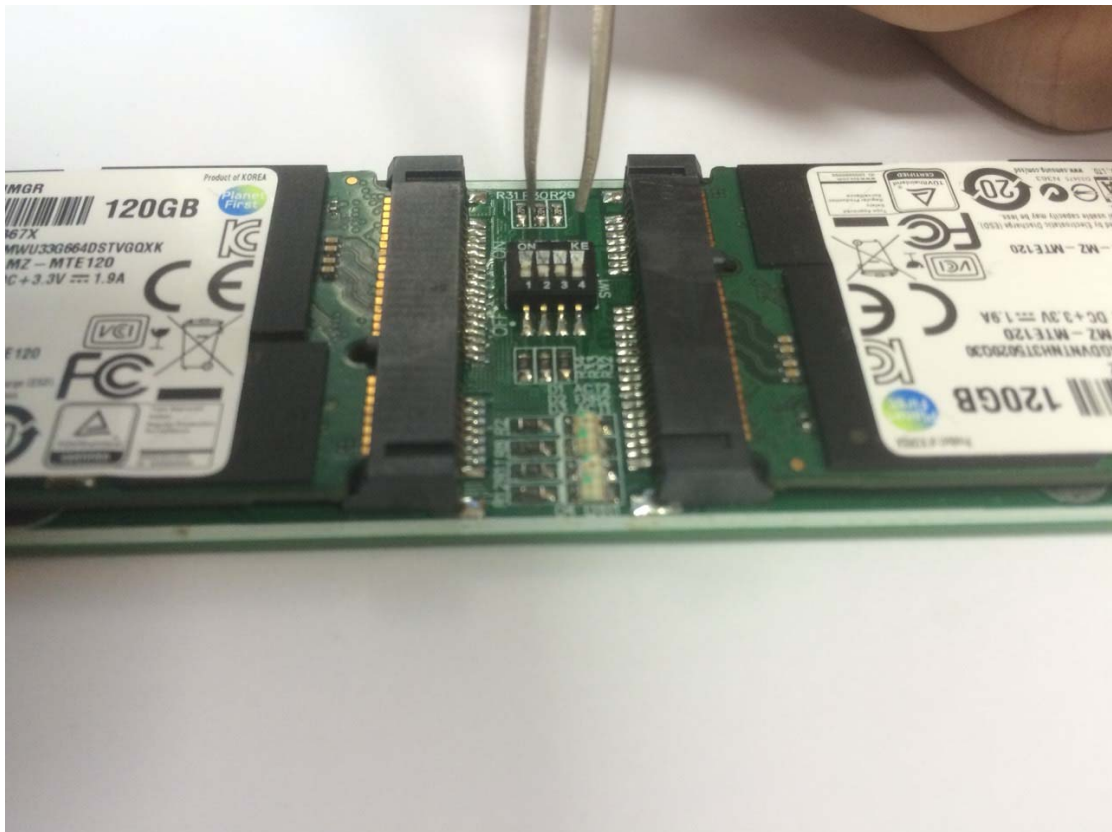
Step 2: Connect USB type C cable to USB port of system (laptop or desktop) · see the picture as below:



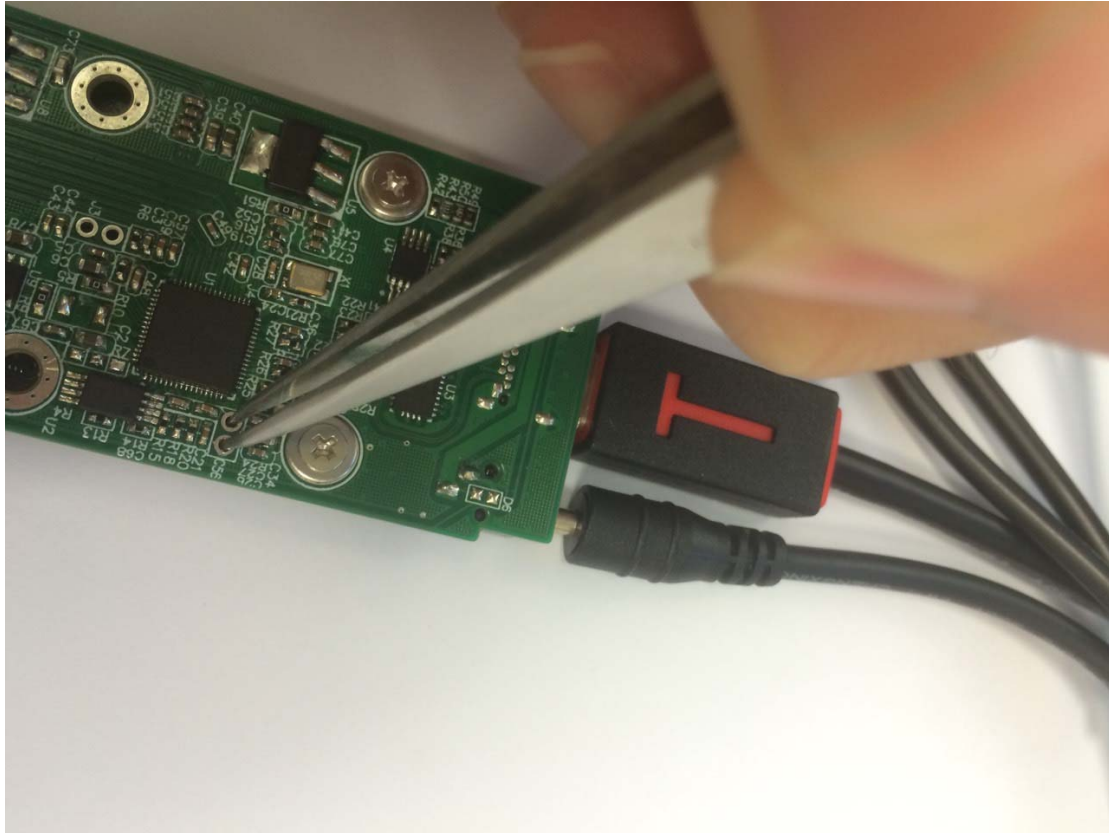
Step 3: Connect power cable and USB type C cable to U31MR, see the picture as below:



Step 4: Setting RAID Mode, see the picture as below:



Step 5: Setting RAID Reset · Short J4 5 sec (need connector to system), see the picture as below:



Step 6: System will be refresh HDD list again:

Volume	Layout	Type	File System	Status	Capacity	Free Spa...	% Free
	Simple	Basic		Healthy (R...	300 MB	300 MB	100 %
(C:)	Simple	Basic		Healthy (E...	100 MB	100 MB	100 %
New Volume (D:)	Simple	Dynamic	NTFS	Healthy (B...	59.12 GB	32.92 GB	56 %
New Volume (D:)	Simple	Basic	NTFS	Healthy (P...	111.66 GB	111.56 GB	100 %
New Volume (E:)	Simple	Basic	NTFS	Healthy (P...	111.66 GB	111.56 GB	100 %

Seq	Read [MB/s]	Write [MB/s]
Seq	452.9	285.3
512K	413.2	150.6
4K	25.47	86.61
4K QD32	28.65	53.72

Disk	Layout	Type	File System	Status	Capacity	Free Spa...	% Free		
Disk 0	Dynamic	55.51 GB	Online	300 MB	Healthy (Recovery Partition)	100 MB	Healthy (EFI System Partition)	(C:) 59.12 GB NTFS	Healthy (Boot, Page File, Crash Dump)
Disk 1	Basic	111.67 GB	Online	New Volume (D:)	111.66 GB NTFS	Healthy (Primary Partition)			
Disk 2	Basic	111.67 GB	Online	New Volume (E:)	111.66 GB NTFS	Healthy (Primary Partition)			