

# Model Name: PE4L

## Product Name: PCIe Add-on Card adapter

### schematic Ver1.5

Schematic update note:

First released.....2009/June/20 V1.10

2nd released.....2009/Aug /01 V1.20

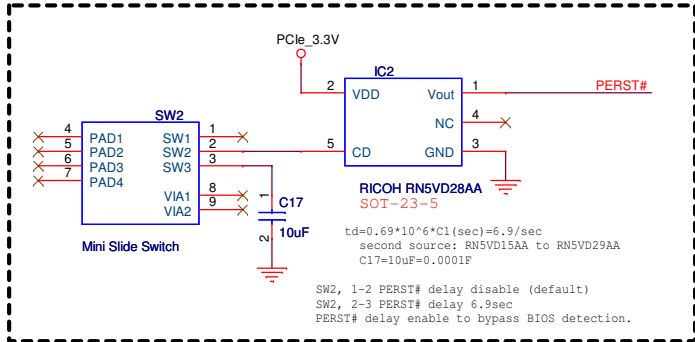
Add Floppy +12V, +5V input  
Add USB port  
Change DC/DC to V/R LT1084Ct-3.3

3rd released.....2009/Dec /08 V1.40

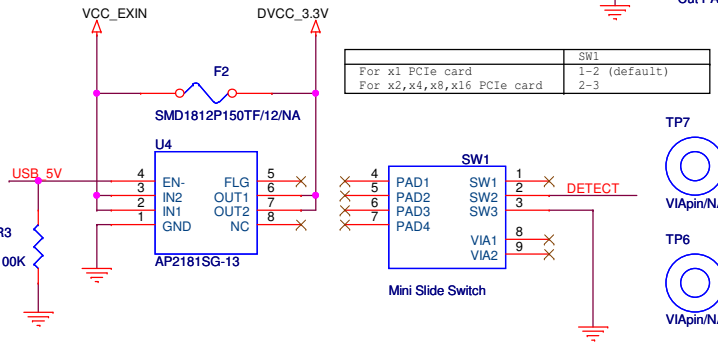
Add U4 AP2181 power switch IC  
Add D4

4nd released.....2010/Apr /19 V1.5

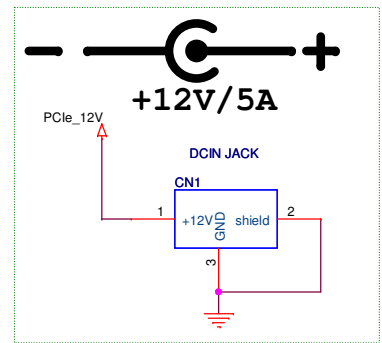
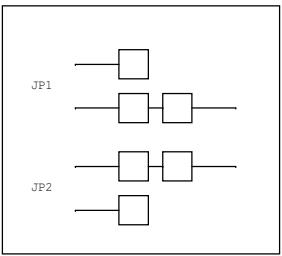
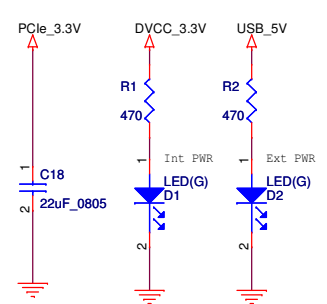
Add IC2, SW2 delay schematic



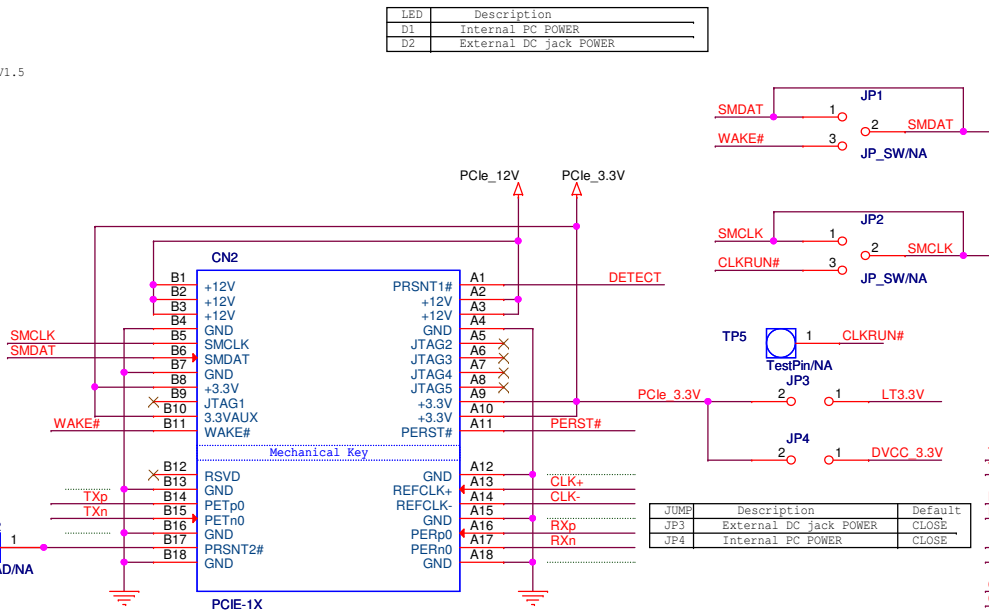
SW2	Description
1-2	PERST# delay disable
2-3	PERST# dealy enable



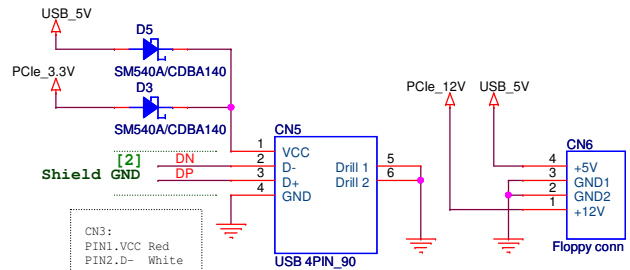
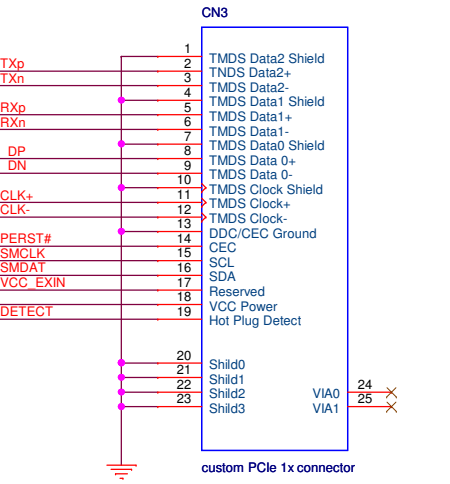
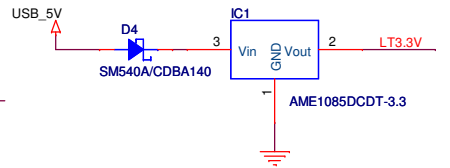
PE4L product design for x1 PCIe add-in card. Insert x2,x4, x8, x16 may not detect and no power. Switch SW1 to 2-3 can force detect and power ON to test all of PCIe card.



LED	Description
D1	Internal PC POWER
D2	External DC jack POWER



JUMP	Description	Default
JP3	External DC jack POWER	CLOSE
JP4	Internal PC POWER	CLOSE



CN3:	Color
PIN1.VCC	Red
PIN2.D-	White
PIN3.D+	Green
PIN4.GND	Black

Title: PE4L PCIe adapter design by: Mike		
Size: B	Document Number: PCIE_EXCARD	Rev: 1.5
Date: Monday, July 12, 2010	Sheet 1 of 1	