
USB 3.0 Host Controller Driver

ISG-NC1-200061

Rev.0.04

Driver Package Information

February 17th, 2011

Introduction

This manual is intended for engineers who wish to utilize the RENESAS μ PD720200 and μ PD720200A USB 3.0 Host Controller in a Windows™ based system using RENESAS device drivers.

Notice

On April 1st, 2010, NEC Electronics Corporation merged with Renesas Technology Corporation, and Renesas Electronics Corporation took over all the business of both companies. Therefore, we changed the old company name to new company name in driver package from Ver.2.0.4.0.

Target Device

USB3.0 Host Controller μ PD720200 and μ PD720200A

Contents

1. Overview	2
2. INSTALLING DRIVER.....	8
3. USB 3.0 HOST CONTROLLER APPLICATIONS.....	15
4. InstallShield 2010 SP1 PROJECT FILE.....	17

1. Overview

This software is Renesas' original device driver for Windows Operating System that operates USB 3.0 Host controllers μ PD720200 and μ PD720200A.

1.1 System Requirements

The device drivers for the μ PD720200 and μ PD720200A work under the following Operating Systems.

1. Microsoft Windows XP (x86 and x64)
2. Microsoft Windows Vista (x86 and x64)
3. Microsoft Windows 7 (x86 and x64)
4. Microsoft Windows Server 2008 Release 2 (x64)

1.2 USB3.0 Host Controller Driver Installer Package Information

The USB3.0 Host Controller Driver Installer Package is generated by Install Shield 2010 SP1. The USB3.0 Host Controller Driver Installer Package includes the following files that provide the interface between μ PD720200/ μ PD720200A and desktop, laptop, Docking Station, or notebook PC:

1.2.1 Files

- nusb3hub.cat** : Catalog file for RENESAS Electronics USB 3.0 Root Hub Driver
- nusb3hub.inf** : INF file for installing RENESAS Electronics USB 3.0 Root Hub Driver
- nusb3hub.sys** : RENESAS Electronics USB 3.0 Hub controller Driver
- nusb3xhc.cat** : Catalog file for RENESAS Electronics xHCI Driver
- nusb3xhc.inf** : INF file for installing RENESAS Electronics xHCI Driver
- nusb3xhc.sys** : RENESAS Electronics eXtensible Host Controller Interface (xHCI) Driver
- nusb3mon.exe** : RENESAS Electronics USB3.0 Host Controller monitor application
- nusb3mon.dll** : RENESAS Electronics USB3.0 Host Controller monitor application DLL
- nusb3utl.exe** : RENESAS Electronics USB3.0 Host Controller Utility
- nusb3ver.dll** : RENESAS Electronics USB3.0 Host Controller driver version
- nusb3mon.exe.mui** : Monitor application Multi Language Interface file
- nusb3utl.exe.mui** : Utility Multi Language Interface file

1.2.2 LCID

The USB3.0 Host Controller Driver Installer Package supports the following 30 languages:

Table 1 Local ID (LCID) of Microsoft

LCID(Hex)	Language	LCID(Hex)	Language	LCID(Hex)	Language
0401	Arabic	040D	Hebrew	041B	Slovak
0404	Traditional Chinese	040E	Hungarian	041D	Swedish
0405	Czech	0410	Italian	041E	Thai
0406	Danish	0411	Japanese	041F	Turkish
0407	German	0412	Korean	0424	Slovenian
0408	Greek	0413	Dutch	0804	Simplified Chinese
0409	English	0414	Norwegian (Bokmal)	0816	Portuguese (Portugal)
040A	Spanish (Traditional)	0415	Polish	0C04	Chinese (Hong Kong)
040B	Finnish	0416	Portuguese (Brazilian)	0C0A	Spanish (Modern)
040C	French	0419	Russian	2C0A	Spanish (Argentina)

1.2.3 Command Line Options

The USB3.0 Host Controller Driver Package supports the following command Line options:

- /s** : Silent install command (refer to section 2.4.1)
- /r** : Generate setup.iss file used for silent install (refer to section 2.4.2)
- /v"CHECK_HW_EXIST=1"** : Check existence of USB3 Host Controller (refer to section 2.5)
- /v"CHECK_HW_EXIST=1 NO_MESSAGE=1"** : Hide the pop-up message when Host Controller is not found on used "CHECK_HW_EXIST=1" option (refer to section 2.9)
- /v"NO_MONITOR=1"** : Monitor application not installed when previous driver package is not installed (refer to section 2.6)
- /v"NO_UTILITY=1"** : Utility application not installed when previous driver package is not installed (refer to section 2.7)
- /v"SET_SEL_SUS_MODE1=1"** : Disable the Selective Suspend function. (refer to section 2.8)
- /v"U1U2_DISABLE=1"** : Disable the Dynamic U1/U2 state control function (refer to section 2.10)
- /v"U1U2_UTL_DISABLE=1"** : Not displaying the check box to disable the Dynamic U1/U2 state control function on "nusb3utl.exe" (refer to section 2.11)

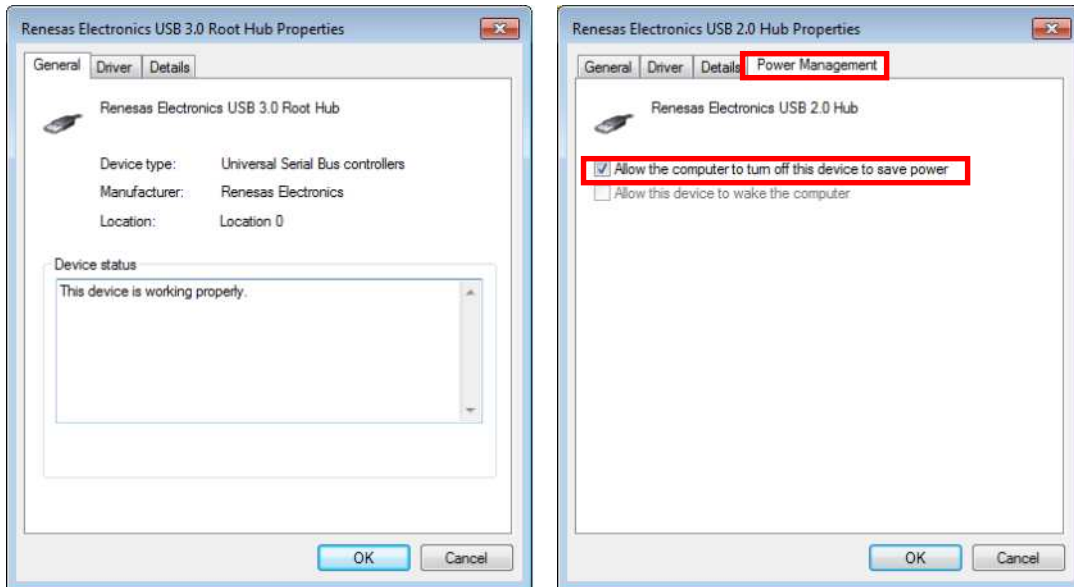
1.3 Installation

The installation procedure includes 3 main steps:

1. Installing the driver software package to a computer
2. Installing the hardware
3. Installing the driver for USB 3.0 host controller.

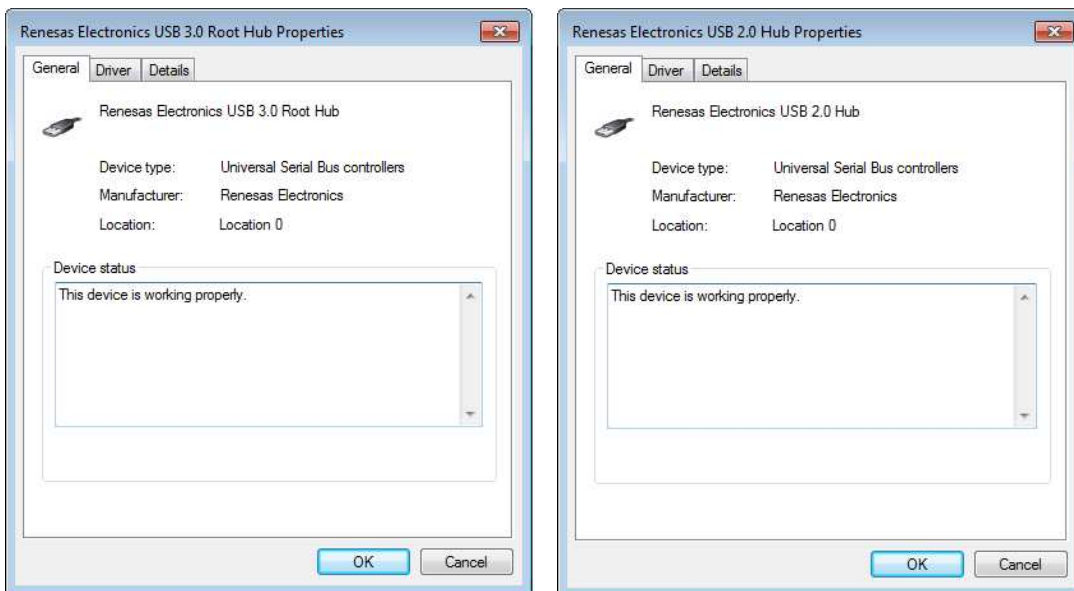
1.4 Selective Suspend Function

USB 3.0 Host Controller Driver supports the Selective Suspend function for External Hubs from Ver2.0.20.0 or later. When RENESAS-USB3-Host-Driver-20200-setup.exe is installed without command line option on your PC, the Selective Suspend function is supported as follows. End Users can change it to “disable” on the Power Management tab of the External Hub’s property page in Device Manager.



If you want to disable the Selective Suspend function, use the install option (/v"SET_SELSSUS_MODE1=1"). Please see section 2.8.

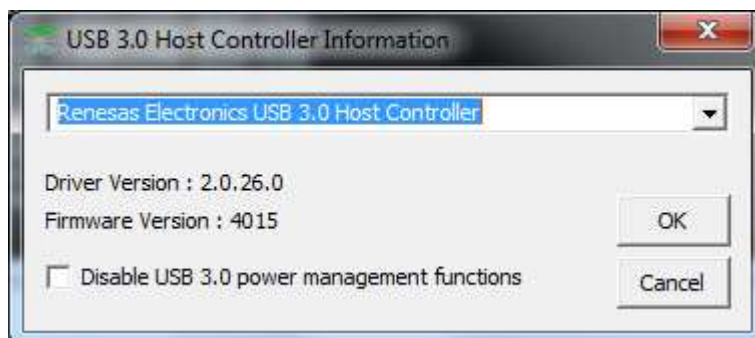
When using this command line option, the Selective Suspend function can be disabled as follows. This is same as in Ver2.0.4.0 or earlier.



Note : Selective Suspend function for External Hub is based upon Windows 7.

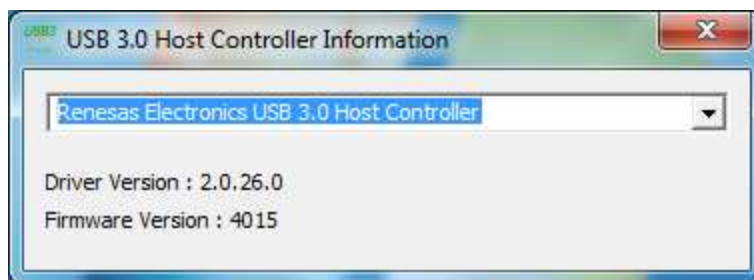
1.5 Dynamic U1/U2 state control Function

USB 3.0 Host Controller Driver supports the Dynamic U1/U2 state control function (USB3.0 power management) from Ver2.0.4.0 or later. Also end user can disable this on USB 3.0 Host Controller Utility (nusb3ult.exe) from ver2.0.26.0 or later.



If you want to disable the Dynamic U1/U2 state control function, please use the install option (/v"U1U2_DISABLE=1"). Please see section 2.10.

If you don't want to display this check-box, use the install option (/v"U1U2_UTL_DISABLE=1"). Please see section 2.11. In using this command line option, the end user cannot change the setting of Dynamic U1/U2 state control function on USB 3.0 Host controller Utility. This is same as in Ver2.0.4.0 or earlier.

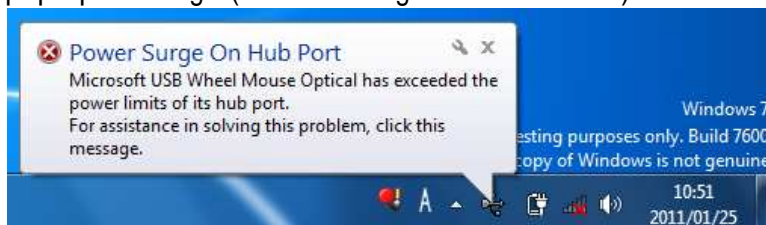


1.6 Over Current Function

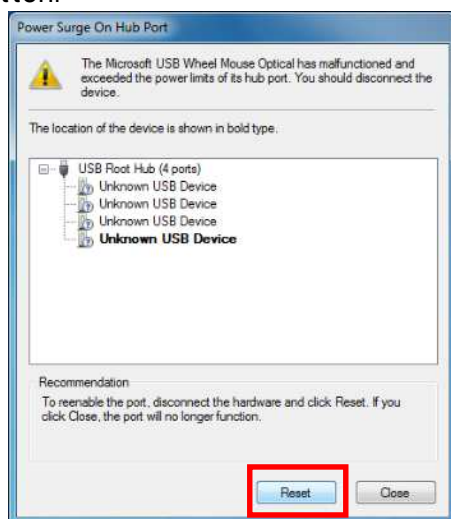
RENESAS USB 3.0 Host Controller Driver uses the Microsoft standard Over Current application.

To recover from the Over Current status, End Users have to reset the status with the application or restart the PC. The reset method with the application is shown below.

1. Click the pop up message (“Power Surge On Hub Port”)



2. Click the “Reset” button.



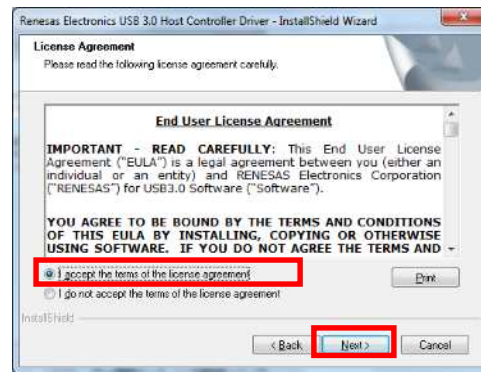
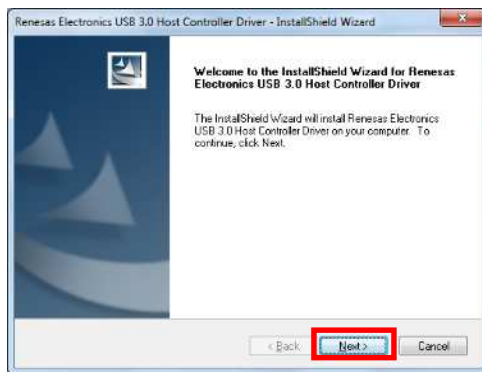
Note : RENESAS USB 3.0 Host Controller Driver’s behavior differs from Microsoft’ behavior.

2. INSTALLING DRIVER

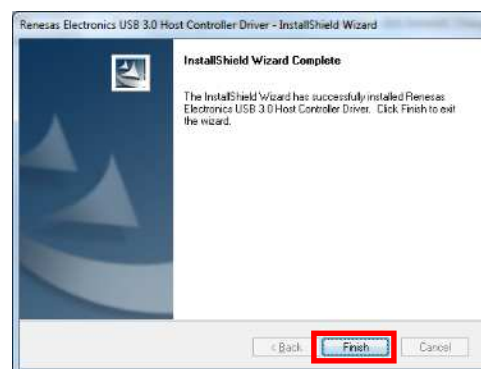
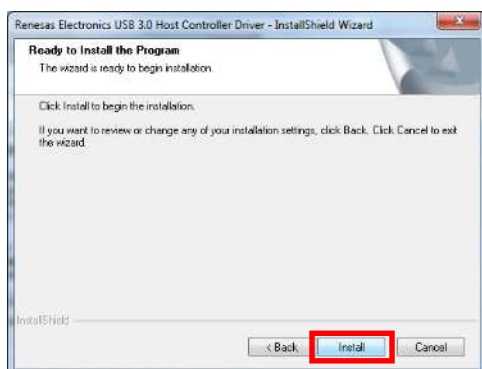
This chapter describes how to install drivers for μ PD720200 and μ PD720200A. All the following sections are written based on Windows 7. Note that the comments and conditions for other OS platforms may be different from these sections.

2.1 Installing the drivers for the μ PD720200 and μ PD720200A

1. Save the **RENESAS-USB3-Host-Driver-xxxx-Setup.exe** on your PC at location of your choice. The **xxxx** portion shows version of installer package. This document is based on **RENESAS-USB3-Host-Driver-2040-Setup.exe**.
2. Start the **Run...** command on the **Start** menu and **Browse...** for the **RENESAS-USB3-Host-Driver-2040-Setup.exe** in your folder containing the driver files. Click on the **OK** button to start the installation procedure.
3. When the following dialog box is displayed, click on the **Next** button.
4. After accepting the terms in the License Agreement, click on the check box and the **Next** button.



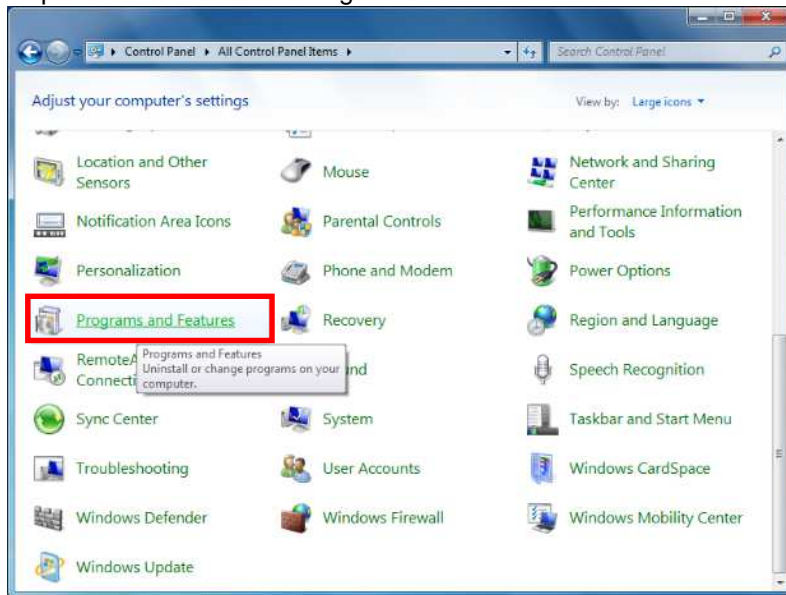
5. Click on the **Install** button to start installing the Renesas Electronics drivers.
6. Click on the **Finish** button to exit the driver installation program.



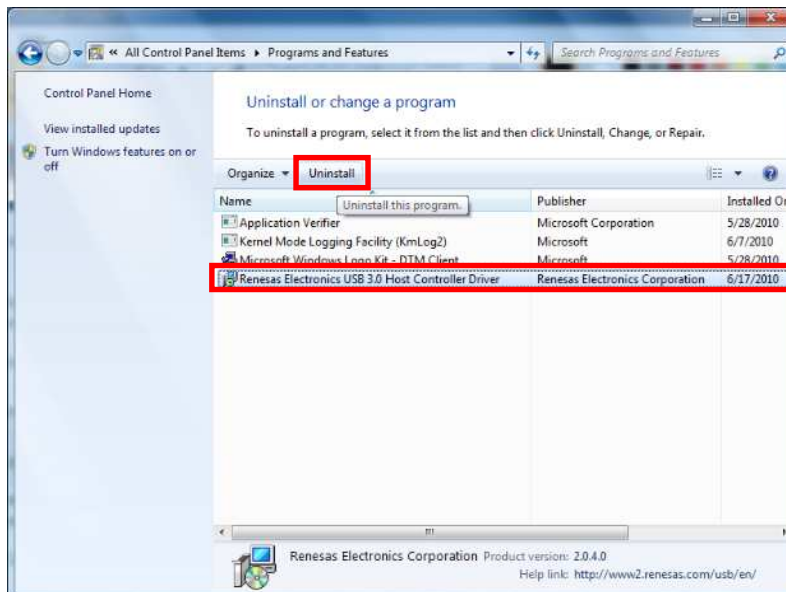
2.2 Uninstalling the drivers for the μ PD720200 and μ PD720200A

RENESAS-USB3-Host-Driver-xxxx-Setup.exe can uninstall only by using Programs and Features in Control Panel. This section describes how to uninstall in more detail.

1. Open “control panel”. And click the “Programs and Features”.



2. When the following dialog box is displayed, select the **Renesas Electronics USB3.0 Host Controller Driver**. Click **Uninstall** button.

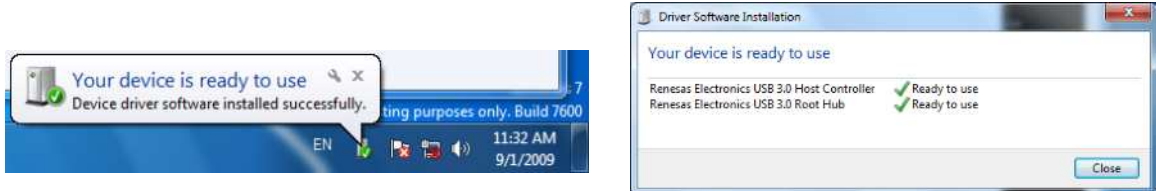


3. Start the Uninstalling.
4. Click on the **Finish** button to exit the uninstall program.

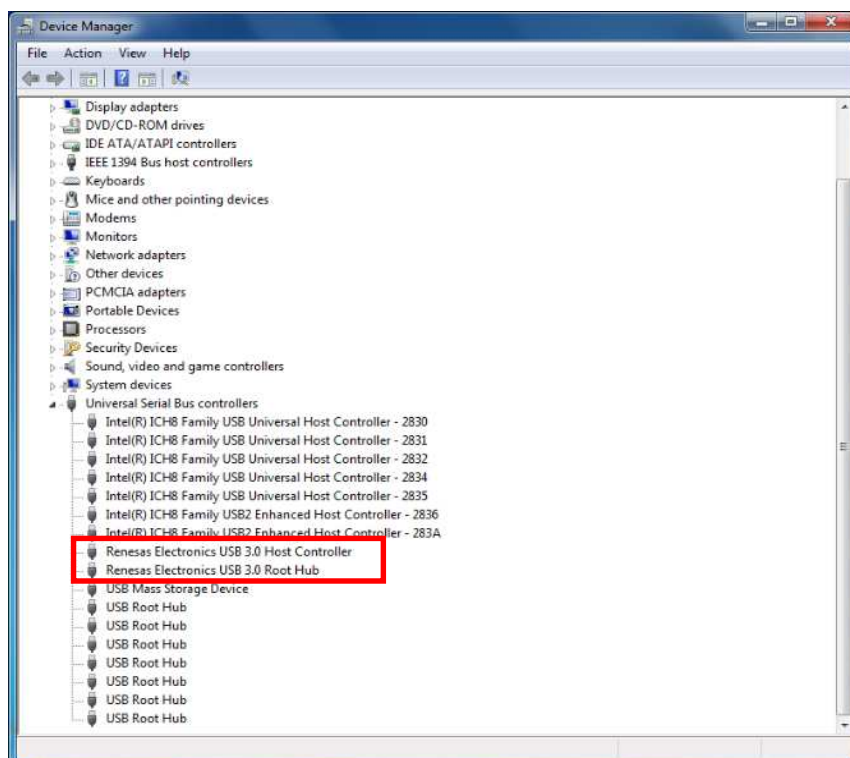


2.3 Installing the host controller drivers

1. The computer will detect the USB 3.0 Host controller at power on, or when a card is plugged into a PCI Express or Express card slot. Once the Host Controller is detected, a dialog box is displayed and should read “Device driver software installed successfully.” When you click this dialog box, the Driver software Installation dialog box is displayed as shown,



2. From the **Start** menu, click on the **Control Panel**. From **Control Panel**, click on **System and Security**, and then click on the **Device Manager**. You should find the **RENESAS Electronics USB 3.0 Host Controller** and the **RENESAS Electronics USB 3.0 Root Hub** under the **Universal Serial Bus Controllers** entry in the Device Manager. If there is not an “X” or “!” beside these entries, the driver installation for USB 3.0 Host Controller has finished successfully.



2.4 Silent installation of the drivers for the μ PD720200 and μ PD720200A

A normal installation receives the necessary input from end users in the form of responses to dialog boxes. However, a silent installation does not prompt the end user for input. A silent installation must get its end-user input from an InstallShield silent response file. (.iss file)

2.4.1 Silent installation

1. Uninstall the drivers for the μ PD720200 and μ PD720200A, if the drivers are installed on your PC. See section 2.2.
2. Run the following command:
setup.exe /s

Note: When you run the silent installation command, the return code file will be generated in the “setup.log” file.

2.4.2 Recording the response file (setup.iss)

1. Start the **Run...** command on the **Start** menu and **open command prompt**.
2. Move the directory of the **RENESAS-USB3-Host-Driver-xxxx-Setup.exe** or **Setup.exe** on your PC to the location of your choice.
3. Run the following command and run the installation step (see section 2.1):
setup.exe /r /f1“.\setup.iss” (Save the setup.iss file in the current directory.)

2.5 Option: Check existence of USB3 Host Controller

This option checks existence of a USB3 Host Controller. If a USB3 Host controller doesn't exist on your PC, the device driver is not installed on your target PC. On the other hand, if a USB3 Host Controller exists, the device driver is installed.

1. Start the **Run...** command on the **Start** menu and **open command prompt**.
2. Run one of the following Installing commands.

Ex.1) `setup.exe /v"CHECK_HW_EXIST=1"`

Ex.2) `setup.exe /v"CHECK_HW_EXIST=1 NO_MESSAGE=1"`

3. If USB 3.0 Host Controller doesn't exist on your PC, Installer stops the installation. Also the following pop-up is shown when using Ex. 1 command.



Note : If this pop-up message doesn't need to show, please use the “NO_MESSAGE” option, which is shown as Ex. 2 above and described in section 2.9 in more detail.

Note : The CHECK_HW_EXIST option is supported from Ver.1.0.14.0.

Note : It is necessary to restart your PC after uninstalling the device driver in the case of an existing USB3 Host Controller. This is a restriction of this command line option. This option checks existence of a USB3 Host Controller. When USB3 Host Controller doesn't exist on your target PC, this option causes the driver not to be installed.

2.6 Option: Monitor Application not Installed

This option causes the Monitor application of USB 3.0 not to be installed. If you don't want to install the Monitor application, you should use this option on command prompt.

1. Start the **Run...** command on the **Start** menu and **open command prompt**.
2. Run the following Installing command.

Ex.1) setup.exe /v"NO_MONITOR=1"

Note : This option is supported from Ver.1.0.19.0.

Note : If there is a USB3.0 Monitor Application already installed, it is necessary to uninstall the USB3 driver package of the previous version before installing the new USB3 driver package (v1.0.19.0 or later).

2.7 Option: Utility Application not Installed

This option causes the Utility application of USB 3.0 not to be installed. If you don't want to install the Utility application, you should use this option on command prompt.

1. Start the **Run...** command on the **Start** menu and **open command prompt**.
2. Run the following Installing command.

Ex.) setup.exe /v"NO_UTILITY=1"

Note : This option is supported from Ver.2.0.4.0.

Note : If there is a USB3.0 Utility Application already installed, it is necessary to uninstall the USB3 driver package of the previous version before installing the new USB3 driver package (v2.0.4.0 or later).

2.8 Option: Disable the Selective Suspend function

Selective Suspend function is enabled by default starting with Ver2.0.20.0. This option disables the Selective Suspend function. The Selective Suspend function is described in section 1.4. If you want to disable the Selective Suspend function, you should use this option on the command prompt.

1. Start the **Run...** command on the **Start** menu and **open command prompt**.
2. Run the following Installing command.

Ex.) setup.exe /v"SET_SELSSUS_MODE1=1"

Note : This option is supported from Ver.2.0.20.0.

Note : Selective Suspend function for External Hubs is supported from Ver.2.0.20.0.

2.9 Option: Hide the pop-up message

This option suppresses the pop-up message when it is used with the "CHECK_HW_EXIST" option. If you want to hide the pop-up message on the "CHECK_HW_EXIST" option, you should use this option on the command line.

1. Start the **Run...** command on the **Start** menu and **open command prompt**.
2. Run the following Installing command.

Ex.) `setup.exe /v"CHECK_HW_EXIST=1 NO_MESSAGE=1"`

Note : This option is supported from Ver.2.0.20.0.

Note : This option can be used only with the "CHECK_HW_EXIST" option. If this option is used alone, it has no effect.

2.10 Option: Disable the Dynamic U1/U2 state control function

The Dynamic U1/U2 state control function is enabled in default setting with Ver2.0.4.0, and this is described in section 1.5. If you want to disable the Dynamic U1/U2 state control function, please use this option on the command prompt.

1. Start the **Run...** command on the **Start** menu and **open command prompt**.
2. Run the following Installing command.

Ex.) `setup.exe /v"U1U2_DISABLE=1"`

Note : This option is supported from Ver.2.0.26.0.

2.11 Option: Disable the check-box on USB 3.0 Host Controller Utility

From ver2.0.26.0, the USB 3.0 Host controller Utility supported the check-box to disable the Dynamic U1/U2 state control function. Please see section 3.1.1 for more detail. This check-box appears by default with Ver2.0.26.0.

If you don't want to display this check-box on the USB 3.0 Host controller Utility, please use this option on the command prompt.

1. Start the **Run...** command on the **Start** menu and **open command prompt**.
2. Run the following Installing command.

Ex.) `setup.exe /v"U1U2_UTL_DISABLE=1"`

Note : This option is supported from Ver.2.0.26.0.

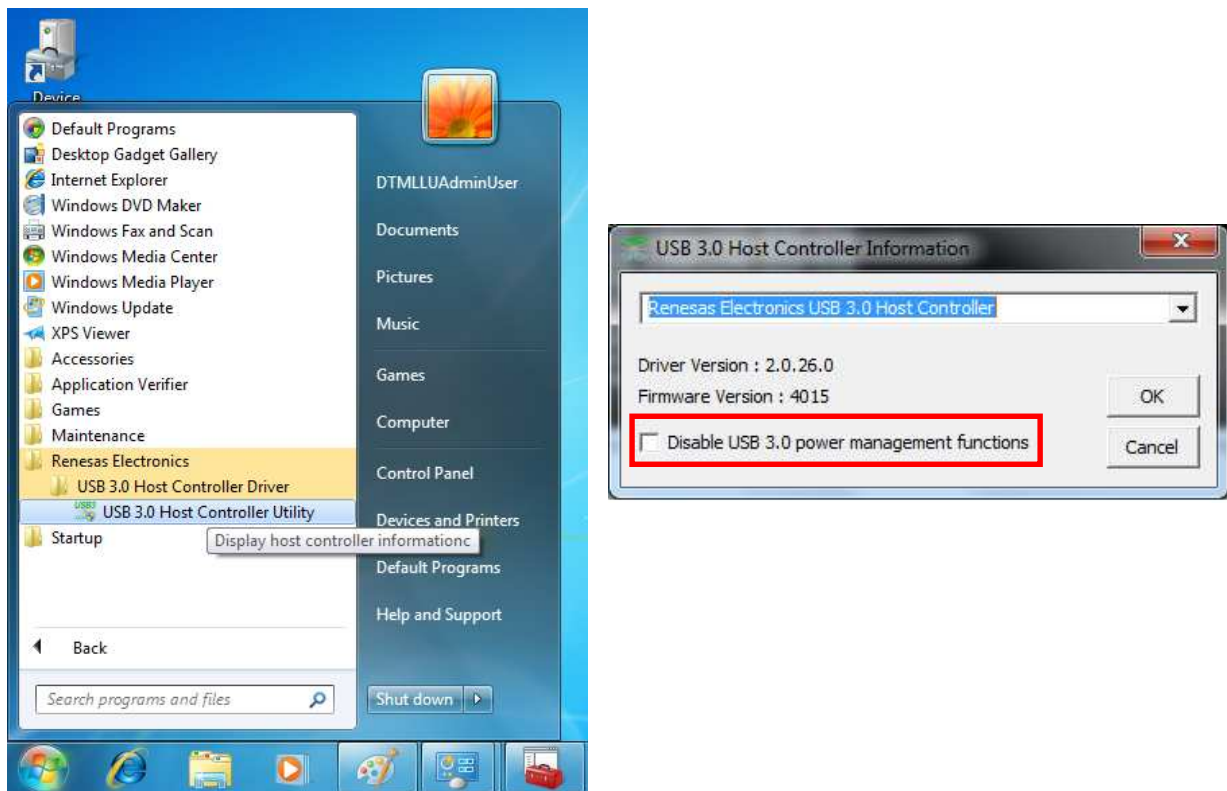
3. USB 3.0 HOST CONTROLLER APPLICATIONS

This chapter describes the applications in more detail. All of the following sections are written based on Windows 7. Note that the comments and conditions for other OS platforms may be different from these sections.

3.1 Installing the Host Controller Applications

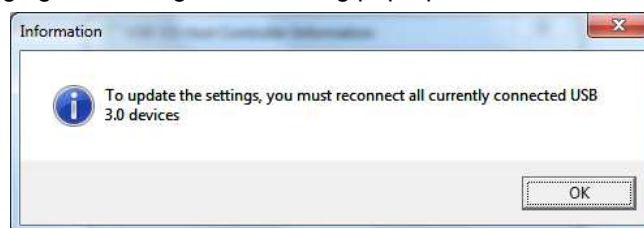
3.1.1 USB3.0 Host Controller Utility

This is a mini-application which displays the version of the host controller's FW and driver. This application is installed in the "All Programs" section of the Windows start menu.



From ver2.0.26.0, the end user can disable the Dynamic U1/U2 state control function (USB 3.0 power management). This method is follows.

1. Run the "USB 3.0 Host Controller Utility (nusb3utl.exe)".
2. Click the check box of "Disable USB3.0 power management functions".
3. Click "OK" button.
4. When changing this setting, the following pop-up is shown.



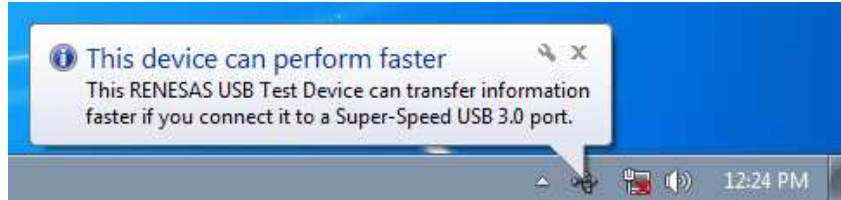
Note: To update the settings, you must reconnect all currently connected USB 3.0 devices.

3.1.2 USB3.0 Host Controller Monitor

This is a mini-application which displays a pop-up window giving information about the USB connection to the end user. There are only two cases that should appear in this pop-up window:

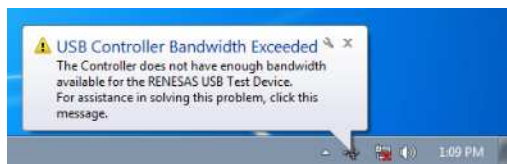
(1) **Pop-up window case1**

A USB3.0 capable device is connected to a port on the USB3.0 Host Controller via a USB2.0 hub or USB 2.0 cable. (See the section 11.1 of Universal Serial Bus 3.0 Specification for more detailed information.)

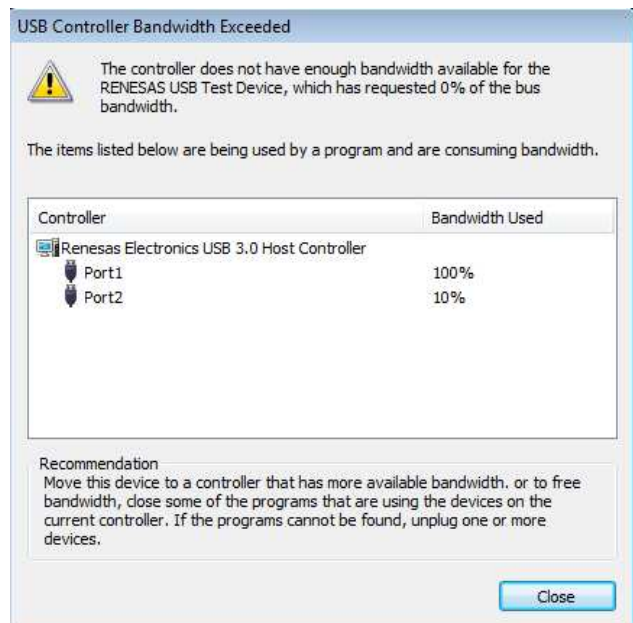
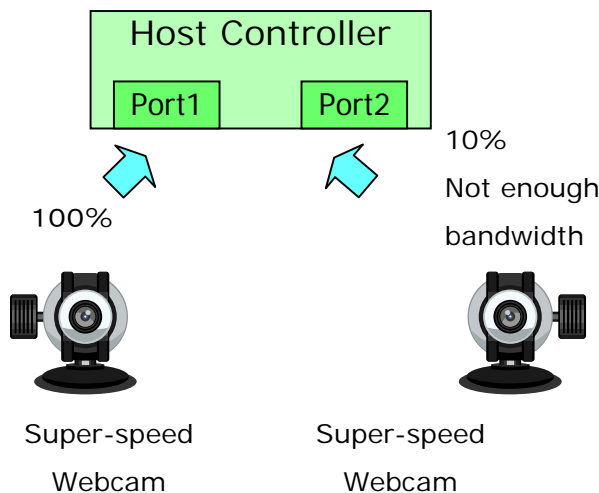


(2) **Pop-up window case2**

A Lack of bandwidth for Super Speed (SS) periodic transfers (Isochronous and Interrupt) for a port on our Host Controller was detected. This is only for super-speed periodic devices. To produce this situation, multiple super-speed isochronous devices are required.



Example)



4. InstallShield 2010 SP1 PROJECT FILE

This chapter describes the InstallShield 2010 SP1 project file in more detail for customizing the driver installer. InstallShield 2010 SP1 is necessary to customize a driver installer. All of the following sections are written based on Windows XP. Note that the comments and conditions for other OS platforms may be different from these descriptions.

4.1 Basic settings

When USB3.0 Host driver installer package is customized, you should set the following items. These settings are necessary to customize the driver installer.

4.1.1 Set the folder Renesas USB 3.0 Host Controller Driver file of Path Variables

At first you should set the absolute path of the source file folder to customize the driver installer at the following locations:

CustomDLLSrcFolderX64 : Located the folder of Custom Action DLL(x64)

CustomDLLSrcFolderX86 : Located the folder of Custom Action DLL(x86)

LicenseSrcFolder : Located the folder of license file

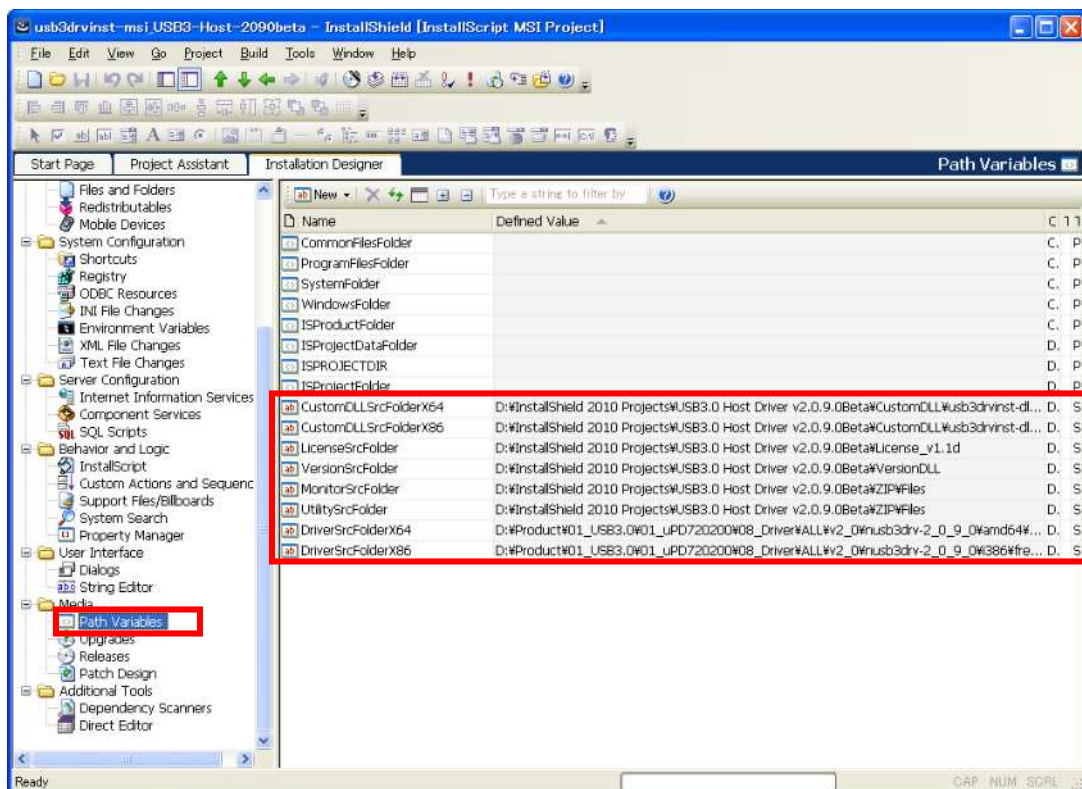
VersionSrcFolder : Located the folder of version DLL

MonitorSrcFolder : Located the folder of Monitor application file

UtilitySrcFolder : Located the folder of Utility application file

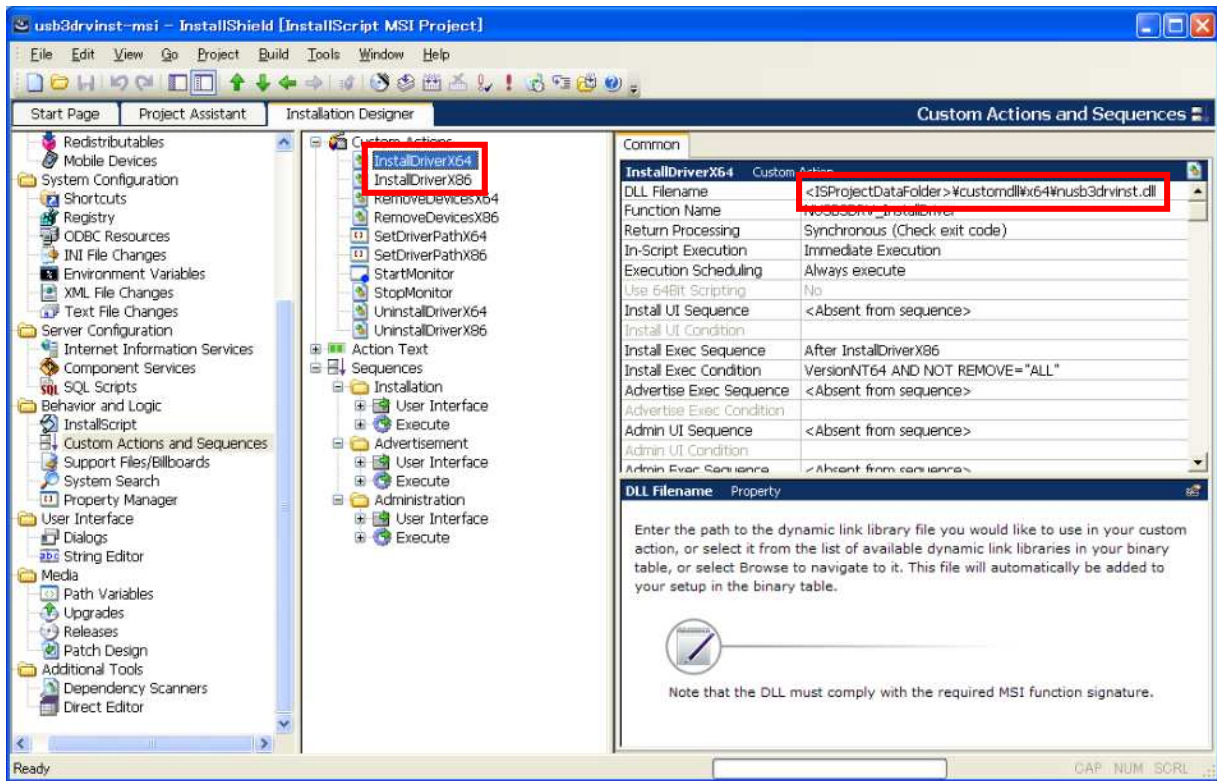
DriverSrcFolderX64 : Located the folder of Driver(x64)

DriverSrcFolderX86 : Located the folder of Driver(x86)

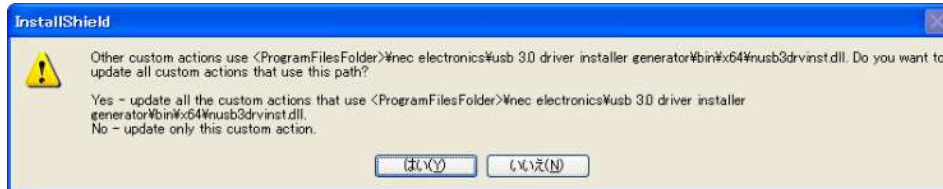


4.1.2 Set the folder of Custom DLL(x86 and x64)

You should set the absolute path of custom action DLL file(x86 and x64).

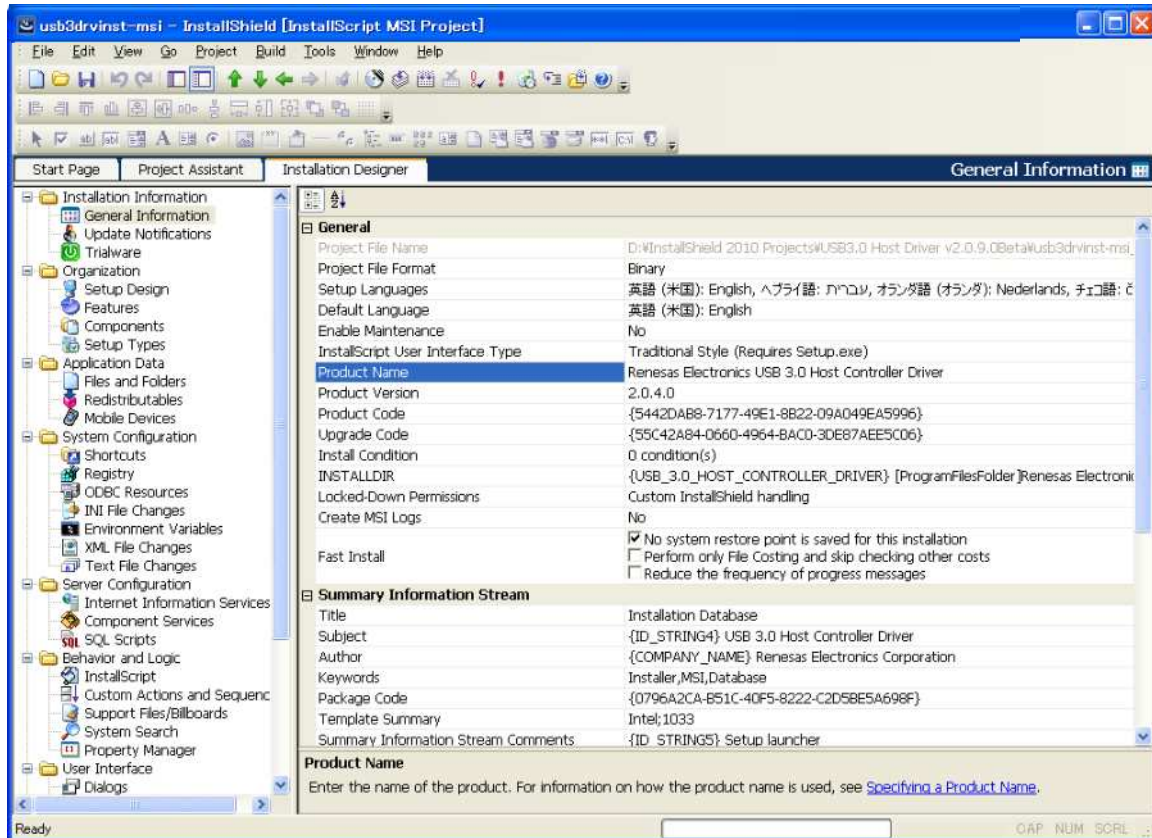


When you set the path of Custom Action DLL(x86 or x64), the following pop-up is shown. You should select “Yes” button, so the absolute path of all custom action DLL (x86 or x64) is replaced.



4.2 General Information

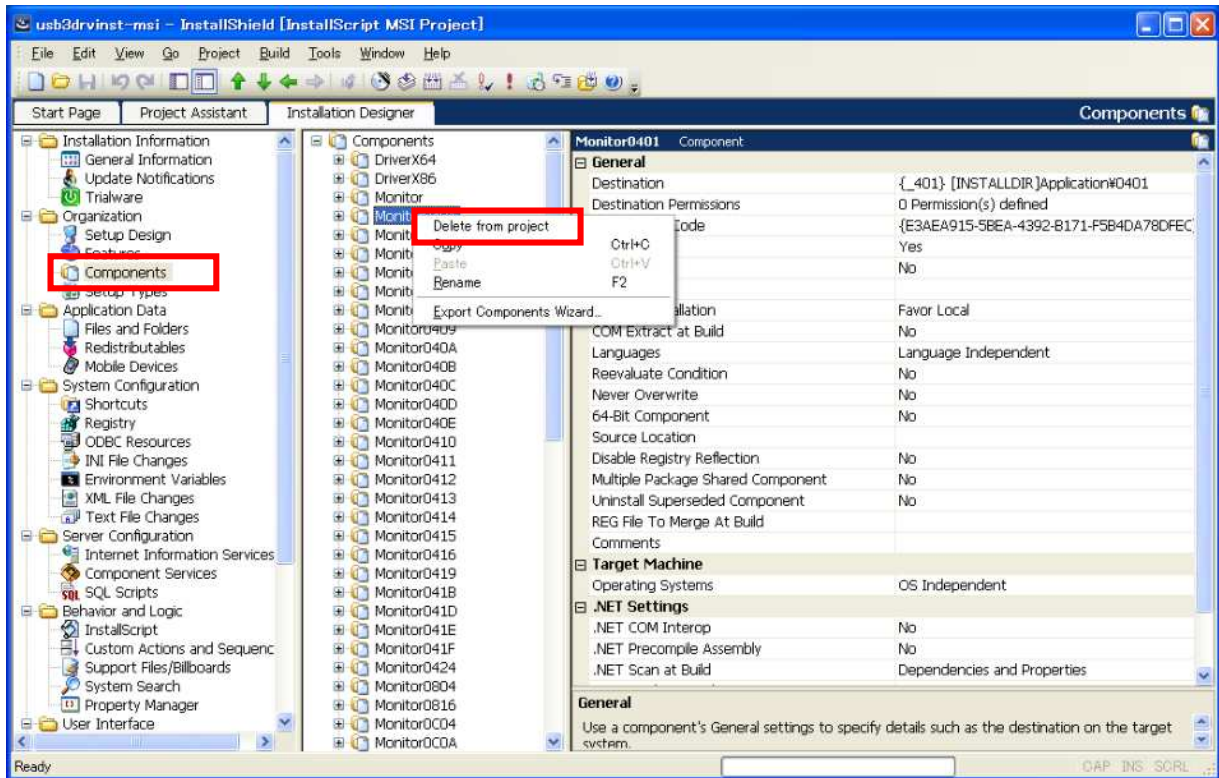
This menu is the general information for Driver Installer. For example, it is possible to change the Supported Language of driver installer, Product Name, Product Version, and so on.



4.3 Supported Languages for Mini Applications

We offer the MUI (Multi User Interface) files for the mini application. MUI file is the display language file for mini applications. If you change the support languages of the mini applications, you should delete the mini application components (Monitor and Utility) from project file. See the following photo.

For example, Monitor0401 folder is stored the Arabic's MUI file. So you need to delete the components of languages which you don't support. See the section 1.2 for more detail of LCID.



5. Appendix

5.1 Setup.exe Return Values and Run-Time Errors (Basic MSI and InstallScript MSI Projects) InstallShield 2010

The table below lists the errors that might occur when Setup.exe runs in a Basic MSI or InstallScript MSI project. For Setup.exe errors that might occur in an InstallScript project, see Setup.exe Return Values and Run-Time Errors (InstallScript Projects).

You can capture these return values when you call the CreateProcess API to launch Setup.exe, or use a batch file to launch Setup.exe.

Note : If an error occurs, the strings displayed might not be displayed in English if your operating system is not running in English.

Error Number	Description	Troubleshooting Tips
-4	Invalid command line.	Verify that a valid command line is passed to Setup.exe.
-3	The installation exited because the end user canceled the installation.	Not applicable.
-1	General error.	
0	Program terminated successfully.	Not applicable.
401	String variable is not large enough for string. InstallShield was attempting to copy a text string into a string variable. The text string was larger than the length declared for that string variable.	Check the declared length of the string variable. Increase the length to the maximum allowed value.
1150	Setup has detected an incompatible version of Windows. Click OK and relaunch the setup on Windows 95, Windows NT 4.0, or later.	Windows Installer is compatible with NT 4.0 and later, and Windows 9x and later. Check your version of Windows and upgrade if necessary.
1151	Error writing to the temporary location	To write to the temporary location, the environment variable TEMP must be set. Verify that the Temp folder exists and has enough disk space to accommodate the setup. If there are files in the Temp folder, delete them and rerun Setup.exe.
1152	Error extracting <file name> to the temporary location	Check to see that you are able to write to the Temp folder (see errors above). If the Temp folder is valid, there may be corrupted files in the setup. Check the files to ensure none are corrupted and rerun Setup.exe.
1153	Error reading setup initialization file	The Setup.ini file must be located in the same folder as Setup.exe. If not, move Setup.ini to that location.
1154	Installer not found in <path>	Windows Installer may not have been properly installed, or you may have an older version. Reinstall if necessary.

1155	File <file name> not found	Make sure the .msi file exists. If so, make sure it is located in the same folder as Setup.exe. You may not see the .msi file if you chose to compress it into Setup.exe.
1156	Internal error in Windows Installer	Windows Installer was unsuccessfully installed. Run the InstMsiW.exe file (for Windows NT and 2000) or InstMsiA.exe (for Windows 9x) to reinstall.
1157	Failed to launch Msiexec.exe.	Make sure you distribute the correct version of Windows Installer for the target platform. Check the syntax on your Msiexec.exe command-line arguments.
1158	Error populating strings.	Verify that all strings in Setup.ini and any language-specific INI files in the Disk1 folder (such as 0x0409.ini) are valid.
1201	Setup needs <amount> KB free space in <folder>. Please free up some space and try again.	There is insufficient disk space in your target location. Please make sure there is at least 10 MB of free space in the drive where the setup is set to install.
1202	You do not have sufficient privileges to complete this installation for all users of the machine. Log on as an administrator and then retry this installation.	In Windows NT 4.0 and 2000, you must have administrative rights to complete this installation.
1203	Invalid command-line parameters.	Double-check the command-line statement used to launch Setup.exe.
1207	Windows Installer <version> not found. This is an older version of Windows Installer. Click OK to continue.	In Windows 2000 and later, Windows Installer is installed by default. If the end user's version of Windows Installer is an earlier version, this warning is displayed. It should not prevent the setup from running correctly. To suppress this warning, select the current release's icon in the Releases view, and change the Suppress Launcher Warning setting to "Yes."
1208	ANSI code page for <language> is not installed on the system and therefore setup cannot run in the selected language. Run the setup and select another language.	Run the setup and select another language.
1603	General Windows Installer engine error. Increase DiskSpace requirement in Setup.ini and try again.	Reinstall Windows Installer by running InstMsiW.exe file (for Windows NT and 2000) or InstMsiA.exe (for Windows 9x) to reinstall.
1611	Unable to extract the file <filename>.	This error occurs when a file compressed inside Setup.exe cannot be extracted. Verify that there is sufficient disk space available in the Temp folder (or, if not, in the Windows or WinNT folder), and that Setup can write to those folders.

1614	An error occurred while downloading the file <filename>.	<p>If the URL is incorrect, click Cancel and enter the correct URL.</p> <p>If the URL is correct, verify that an active Internet connection is available.</p>
1621	Failed to verify signature of file <filename>.	<p>The file was downloaded, but the signature could not be verified. The file might be corrupted, it might have been signed by a different company than originally signed it, or it might not be signed.</p> <p>Verify that the file Wintrust.dll exists on the target system.</p>
1627	Unable to save file: <filename>.	Ensure that the specified file does not already exist, and that the target system has sufficient hard drive space.
1628	Failed to complete script based install.	
1629	Invalid command line.	Double-check the command-line statement used to launch Setup.exe.
1670	Unable to load module [1], Error Code: [2]	<p>[1] is the full path to the .dll file that the installation is attempting to load (ISSetup.dll in all cases).</p> <p>[2] is the Windows error returned from LoadLibrary().</p> <p>This error occurs if ISSetup.dll is not in the Disk1 folder. It also may occur if ISSetup.dll is compressed in Setup.exe if a compressed media is being built.</p> <p>To resolve this error, try rebuilding the release.</p>
1700	An error occurred initializing the InstallScript engine.	This error indicates that a problem occurred when the engine was being loaded.
1701	Unable to extract InstallScript engine support files to temp location.	<p>This error occurs if one or more files could not be extracted from the ISSetup.dll file to a temporary directory.</p> <p>To troubleshoot this error, create a Windows Installer log file to obtain more information. The log file has the corresponding Windows error number and other diagnostic information that may help troubleshoot this issue.</p>
1919	Error configuring ODBC data source. Verify that the file exists and that you can access it.	Machines running Windows 95 do not have the ODBC core. You need to install MDAC before installing any package with an ODBC driver.

5.2 Checking for Errors Using the Setup.log File

This chapter describes the InstallShield 2010 SP1 project file in more detail for customizing the driver installer. InstallShield 2010 SP1 is necessary to customize a driver installer. All of the following sections are written based on Windows XP. Note that the comments and conditions for other OS platforms may be different from these descriptions.

Result Code	Description
0	Success.
-1	General error.
-2	Invalid mode.
-3	Required data not found in the Setup.iss file.
-4	Not enough memory available.
-5	File does not exist.
-6	Cannot write to the response file.
-7	Unable to write to the log file.
-8	Invalid path to the InstallShield Silent response (.iss) file.
-9	Not a valid list type (string or number).
-10	Data type is invalid.
-11	Unknown error during setup.
-12	Dialog boxes are out of order.
-51	Cannot create the specified folder.
-52	Cannot access the specified file or folder.
-53	Invalid option selected.

All trademarks and registered trademarks are the property of their respective owners.

Revision Record

Rev.	Date	Description	
		Page	Summary
0.01	July 13th, 2010	-	First edition issued.(ISG-NC1-200020)
0.02	August 11th, 2010	-	Second edition issued. (ISG-NC1-200030)
		-	Modified <ul style="list-style-type: none"> - Section 1.1(Added the System Requirement) - Section 1.2.3(Added the Command line option) - Section 2.5(Added the explanation about the pop-up message)
0.03	October 7th, 2010	-	Third edition issued. (ISG-NC1-200040)
		-	Modified <ul style="list-style-type: none"> - Section 1.2.3(Added the Command line option) - Section 3.1.1(Added the explanation about Check-Box to disable the Dynamic U1/U2 state control function)
0.04	February 17th, 2011	-	Added <ul style="list-style-type: none"> - Section 1.4(Selective Suspend function) - Section 2.8(Option: Disable the Selective Suspend function) - Section 2.9(Hide the pop-up message)
		-	Added <ul style="list-style-type: none"> - Section 1.5(Dynamic U1/U2 state control function) - Section 2.10(Option: Disable the Dynamic U1/U2 state control function) - Section 2.11(Option: Disable the check-box on USB 3.0 Host Controller Utility)
0.04	February 17th, 2011	-	Forth edition issued. (ISG-NC1-200061)
		-	Added <ul style="list-style-type: none"> - Section 1.6 (Over Current function) - Section 5 (Appendix)

Notice

1. All information included in this document is current as of the date this document is issued. Such information, however, is subject to change without any prior notice. Before purchasing or using any Renesas Electronics products listed herein, please confirm the latest product information with a Renesas Electronics sales office. Also, please pay regular and careful attention to additional and different information to be disclosed by Renesas Electronics such as that disclosed through our website.
2. Renesas Electronics does not assume any liability for infringement of patents, copyrights, or other intellectual property rights of third parties by or arising from the use of Renesas Electronics products or technical information described in this document. No license, express, implied or otherwise, is granted hereby under any patents, copyrights or other intellectual property rights of Renesas Electronics or others.
3. You should not alter, modify, copy, or otherwise misappropriate any Renesas Electronics product, whether in whole or in part.
4. Descriptions of circuits, software and other related information in this document are provided only to illustrate the operation of semiconductor products and application examples. You are fully responsible for the incorporation of these circuits, software, and information in the design of your equipment. Renesas Electronics assumes no responsibility for any losses incurred by you or third parties arising from the use of these circuits, software, or information.
5. When exporting the products or technology described in this document, you should comply with the applicable export control laws and regulations and follow the procedures required by such laws and regulations. You should not use Renesas Electronics products or the technology described in this document for any purpose relating to military applications or use by the military, including but not limited to the development of weapons of mass destruction. Renesas Electronics products and technology may not be used for or incorporated into any products or systems whose manufacture, use, or sale is prohibited under any applicable domestic or foreign laws or regulations.
6. Renesas Electronics has used reasonable care in preparing the information included in this document, but Renesas Electronics does not warrant that such information is error free. Renesas Electronics assumes no liability whatsoever for any damages incurred by you resulting from errors in or omissions from the information included herein.
7. Renesas Electronics products are classified according to the following three quality grades: "Standard", "High Quality", and "Specific". The recommended applications for each Renesas Electronics product depends on the product's quality grade, as indicated below. You must check the quality grade of each Renesas Electronics product before using it in a particular application. You may not use any Renesas Electronics product for any application categorized as "Specific" without the prior written consent of Renesas Electronics. Further, you may not use any Renesas Electronics product for any application for which it is not intended without the prior written consent of Renesas Electronics. Renesas Electronics shall not be in any way liable for any damages or losses incurred by you or third parties arising from the use of any Renesas Electronics product for an application categorized as "Specific" or for which the product is not intended where you have failed to obtain the prior written consent of Renesas Electronics. The quality grade of each Renesas Electronics product is "Standard" unless otherwise expressly specified in a Renesas Electronics data sheet or data books, etc.
 - *Standard*: Computers; office equipment; communications equipment; test and measurement equipment; audio and visual equipment; home electronic appliances; machine tools; personal electronic equipment; and industrial robots.
 - *High Quality*: Transportation equipment (automobiles, trains, ships, etc.); traffic control systems; anti-disaster systems; anti-crime systems; safety equipment; and medical equipment not specifically designed for life support.
 - *Specific*: Aircraft; aerospace equipment; submersible repeaters; nuclear reactor control systems; medical equipment or systems for life support (e.g. artificial life support devices or systems), surgical implantations, or healthcare intervention (e.g. excision, etc.), and any other applications or purposes that pose a direct threat to human life.
8. You should use the Renesas Electronics products described in this document within the range specified by Renesas Electronics, especially with respect to the maximum rating, operating supply voltage range, movement power voltage range, heat radiation characteristics, installation and other product characteristics. Renesas Electronics shall have no liability for malfunctions or damages arising out of the use of Renesas Electronics products beyond such specified ranges.
9. Although Renesas Electronics endeavors to improve the quality and reliability of its products, semiconductor products have specific characteristics such as the occurrence of failure at a certain rate and malfunctions under certain use conditions. Further, Renesas Electronics products are not subject to radiation resistance design. Please be sure to implement safety measures to guard them against the possibility of physical injury, and injury or damage caused by fire in the event of the failure of a Renesas Electronics product, such as safety design for hardware and software including but not limited to redundancy, fire control and malfunction prevention, appropriate treatment for aging degradation or any other appropriate measures. Because the evaluation of microcomputer software alone is very difficult, please evaluate the safety of the final products or system manufactured by you.
10. Please contact a Renesas Electronics sales office for details as to environmental matters such as the environmental compatibility of each Renesas Electronics product. Please use Renesas Electronics products in compliance with all applicable laws and regulations that regulate the inclusion or use of controlled substances, including without limitation, the EU RoHS Directive. Renesas Electronics assumes no liability for damages or losses occurring as a result of your noncompliance with applicable laws and regulations.
11. This document may not be reproduced or duplicated, in any form, in whole or in part, without prior written consent of Renesas Electronics.
12. Please contact a Renesas Electronics sales office if you have any questions regarding the information contained in this document or Renesas Electronics products, or if you have any other inquiries.
 - (Note 1) "Renesas Electronics" as used in this document means Renesas Electronics Corporation and also includes its majority-owned subsidiaries.
 - (Note 2) "Renesas Electronics product(s)" means any product developed or manufactured by or for Renesas Electronics.



SALES OFFICES

Renesas Electronics Corporation

<http://www.renesas.com>

Refer to "<http://www.renesas.com/>" for the latest and detailed information.

Renesas Electronics America Inc.

2880 Scott Boulevard Santa Clara, CA 95050-2554, U.S.A.
Tel: +1-408-588-6000, Fax: +1-408-588-6130

Renesas Electronics Canada Limited

1101 Nicholson Road, Newmarket, Ontario L3Y 9C3, Canada
Tel: +1-905-898-5441, Fax: +1-905-898-3220

Renesas Electronics Europe Limited

Dukes Meadow, Millboard Road, Bourne End, Buckinghamshire, SL8 5FH, U.K.
Tel: +44-1628-585-100, Fax: +44-1628-585-900

Renesas Electronics Europe GmbH

Arcadiastrasse 10, 40472 Düsseldorf, Germany
Tel: +49-211-6503-0, Fax: +49-211-6503-1327

Renesas Electronics (China) Co., Ltd.

7th Floor, Quantum Plaza, No.27 ZhiChunLu Haidian District, Beijing 100083, P.R.China
Tel: +86-10-8235-1155, Fax: +86-10-8235-7679

Renesas Electronics (Shanghai) Co., Ltd.

Unit 204, 205, AZIA Center, No.1233 Lujiazui Ring Rd., Pudong District, Shanghai 200120, China
Tel: +86-21-5877-1818, Fax: +86-21-6887-7858 / -7898

Renesas Electronics Hong Kong Limited

Unit 1601-1613, 16/F., Tower 2, Grand Century Place, 193 Prince Edward Road West, Mongkok, Kowloon, Hong Kong
Tel: +852-2886-9318, Fax: +852-2886-9022/9044

Renesas Electronics Taiwan Co., Ltd.

7F, No. 363 Fu Shing North Road Taipei, Taiwan, R.O.C.
Tel: +886-2-6175-9600, Fax: +886-2-6175-9670

Renesas Electronics Singapore Pte. Ltd.

1 HarbourFront Avenue, #06-10, Keppel Bay Tower, Singapore 098632
Tel: +65-6213-0200, Fax: +65-6278-8001

Renesas Electronics Malaysia Sdn.Bhd.

Unit 906, Block B, Menara Amcorp, Amcorp Trade Centre, No. 18, Jln Persiaran Barat, 46050 Petaling Jaya, Selangor Darul Ehsan, Malaysia
Tel: +60-3-7955-9390, Fax: +60-3-7955-9510

Renesas Electronics Korea Co., Ltd.

11F., Samik Laviel' or Bldg., 720-2 Yeoksam-Dong, Kangnam-Ku, Seoul 135-080, Korea
Tel: +82-2-558-3737, Fax: +82-2-558-5141